

Sector: Manufacturing

Occupation: MACHINING

Unit of Competence: Perform Advanced Milling CNC Operations

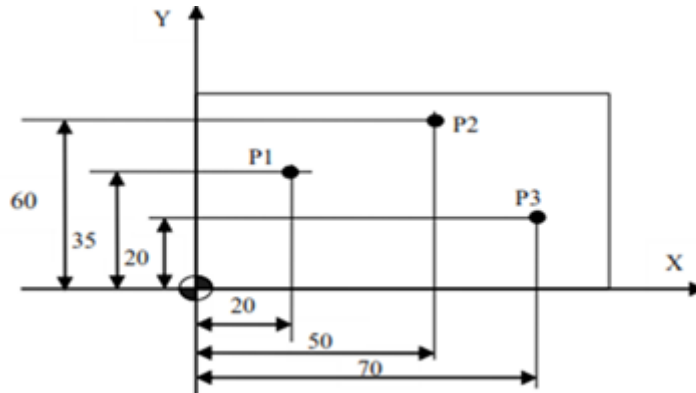
Code: IND MAC3 04 0217

Name _____ ID. No. _____

I. Choose the best answer from the given choice (2 points each)

1. _____ is a fixed position on CNC machine tool, which is determined by cams and measuring system.
A. Reference point B. coordinate point C. cam point D. CNC point

Show the next figure and answer the next three question in absolute command.



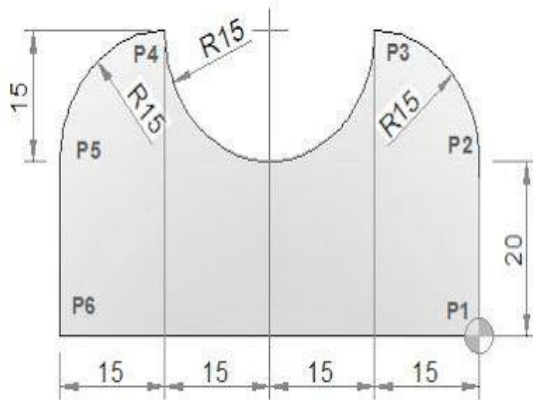
2. P1 indicate?
A. X20 Y35 B. X50 Y60 C. X70 Y20 D. X35 Y20
3. P2 indicate?
A. X20 Y35 B. X50 Y60 C. X70 Y20 D. X35 Y20
4. P3 indicate?
A. X20 Y35 B. X50 Y60 C. X70 Y20 D. X35 Y20

II. Write short answer for the following question

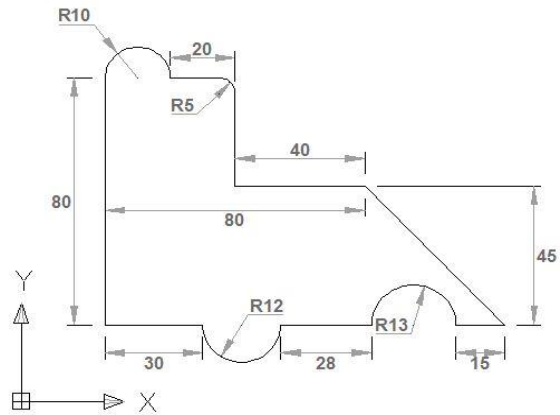
1. Write the two ways to move to the reference point?
A. _____
B. _____

III. Write NC program in absolute and incremental for the following drawings?

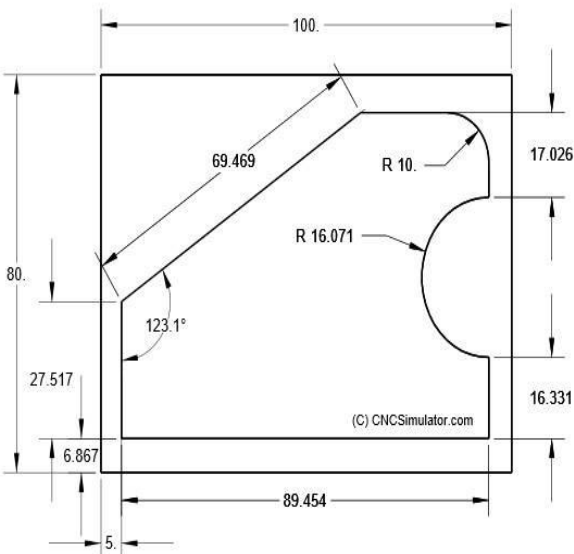
1.



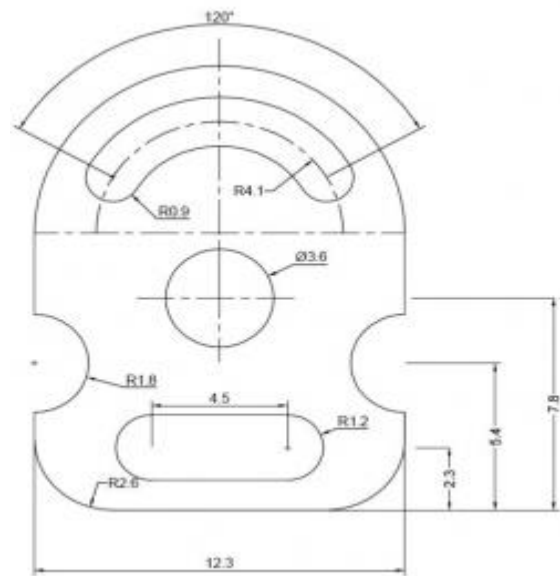
3.



2.



4.



Note: **Satisfactory** rating –35 points above / **Unsatisfactory** 32 below points
You can ask you teacher for the copy of the correct answers